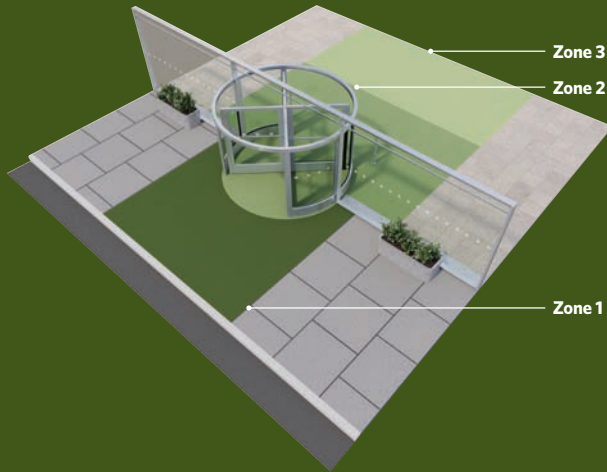


**OBEX**

**ENTRANCE FLOORING SOLUTIONS**



**ECONYL®**  
Made with 100% Regenerated Nylon

*Milliken*

OBEX is a complete entrance flooring system, designed to provide a protective barrier against the outside elements whilst still conveying a positive first impression.

OBEX provides a cleaner and safer living environment, as well as significant savings on flooring cleaning costs.

OBEX products have been engineered to increase the functionality of a building's entrance without forsaking the aesthetics.



## THE ARCHITECTS VOICE

According to the AIA, a minimum of 7.5m of entrance flooring products must be installed to address 100% of the problem caused by dirt and moisture entering a building. This can go up to 12m in extreme traffic areas such as airports.

### Mat Length vs. Percentage of Dirt and Moisture Caught

1.5m = 33% of Soil and Moisture captured

3.0m = 52%

6.0m = 86%

7.5m = 100%

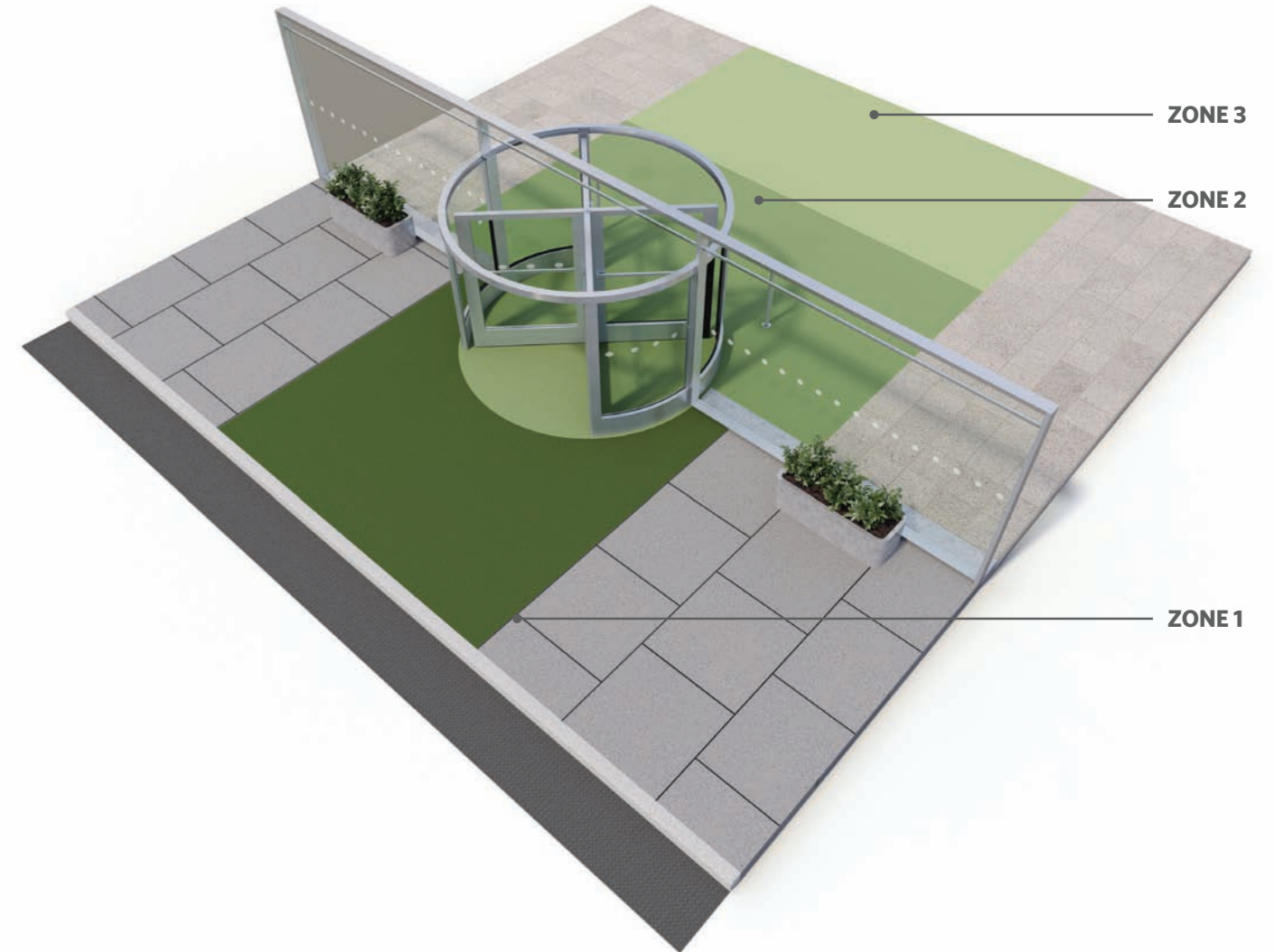
Source:  
American Institute  
of Architects (AIA)

The right combination of OBEX products, correctly installed, can lengthen the appearance retention and, ultimately, the life of the floor coverings inside commercial and public buildings.

**Zone 1 - Outdoors:** The area just before the building access - requires a product with **scraping** action to remove grit and heavy dirt particles, as well as the draining of rain when exposed to the elements

**Zone 2 - Indoors:** The primary area just inside the building - requires a product with dual action for **dirt scraping and moisture retention**, to prevent floor contamination. This area often features a recessed mat well.

**Zone 3 - Indoors:** The secondary area inside the building, after zone 2 - requires a textile product for **moisture retention**. This is also applicable to circulation areas within the building.



## OBEX PRODUCT RANGE

### ZONE 1

Prior

Tergo - Scraper inserts

### ZONE 2

Tergo - Scraper inserts

Forma - Foris inserts

Foris - Rolls in sheets

### ZONE 3

Quadrus - Tiles

Foris - Rolls in sheets

Foris - Mats

Colour Symphony HD - Logomats



Prior installed outdoors, followed by Forma in zone 2, and Foris in zone 3.

First invented and patented by Milliken OBEX, the new ARX collection features an ultra-durable interlocking modular system made of UV resistant and recyclable PVC, combined with high performance textiles to deliver functional and aesthetically pleasing entrance flooring solutions. The innovative ARX HD product line is the second generation of this unique concept based on modularity, function and design, and ease of installation on site, providing a quick delivery for last minute requirements.

**The ARX HD collection consists of 3 products:**

**Prior, Tergo and Forma**, which are offered in both 11 and 16 mm thicknesses to meet all architectural requirements for installation in recessed mat wells or surface mounting on the floor, with open or closed construction for outdoor and indoor applications.

**9 GOOD REASONS TO SELECT THE NEW OBEX ARX HD PRODUCT COLLECTION**

- First invented by Milliken in 1997, ARX HD is the second generation design of OBEX modular grid system with innovative linear aesthetics to match contemporary interior design
- Unique textile construction tufted from twisted and heat set polyamide yarns, providing superior performance
- Environmentally friendly textile inserts made of 100% ECONYL® fibres
- 80% textile coverage to offer great performance in dirt and moisture pick up
- Fire rated products to meet all fire regulations in Europe
- Wear rated products for heavy commercial use in high foot and wheeled traffic areas
- 20x20 cm usable size tile for ease of floor area calculation
- Easy to install with simple tooling - fitter friendly product concept
- Easy to clean to maintain durable high performance

The grid structure of Prior is made of UV resistant PVC that can resist temperatures from -30°C up to +50°C. It incorporates resilient scrapers to remove heavy dirt particles, with a choice of open construction for drainage or closed structure for dirt storage.

**Prior is offered in three product options:**

**PRIOR 16 ORIGINAL:**

**Open construction grid system in 16 mm thickness**

Featuring an open construction for the most efficient drainage and dirt storage, Prior 16 Original is fully compatible with Tergo 16 Original - suitable for outdoor situations exposed to the elements.

**PRIOR 11C HD:**

**Closed construction grid system in 11 mm thickness**

Featuring a closed construction, Prior 11C HD offers the ultimate in easy maintenance. The ideal solution for installation in shallow mat wells or for surface mounting directly on the floor with appropriate edging.

**PRIOR 16C HD:**

**Closed construction grid system in 16 mm thickness**

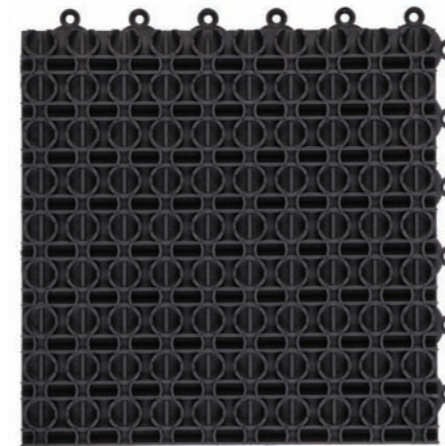
Featuring a closed construction to allow easy and frequent maintenance in situations with high to extreme traffic conditions, Prior 16C HD can be installed outdoors in recessed mat wells under sheltered areas.

**Easy to Install**

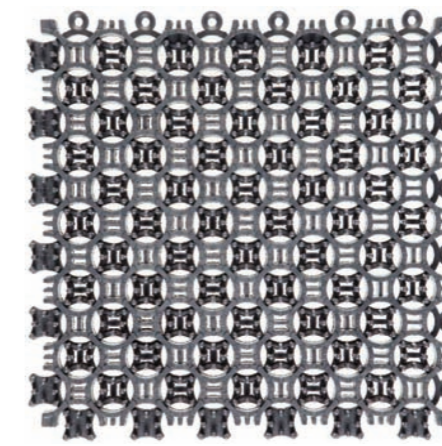
OBEX ARX products are extremely easy to install with simple tools (hammer, sharp knife, ruler, safety glove) and are available with a simple to assemble edging system for surface mounted installation. Prior is recommended for use as the perimeter of Tergo and Forma grids installation.

**Easy to clean**

To clean Prior grid systems installed outdoors, you can hose it with water and use a stiff broom to remove dirt. A high pressure water jet can also be used. When installed indoors together with Tergo and Forma, a hot water extraction machine should be used.



Prior 11C HD / Prior 16C HD



Prior 16 Original



Featuring the same ultra-durable interlocking grid system as Prior, **Tergo** modules include heavy duty solution dyed textile inserts made from 100% ECONYL® polyamide monofilaments to provide a strong brushing action. Tergo provides a powerful first line of defence and stops dirt and dust before it enters the building.

**Tergo and Forma are offered in three product options:**

**TERGO 16 ORIGINAL:**

**Open construction grid system in 16 mm thickness**  
Featuring an open construction for the most efficient drainage and dirt storage, Tergo 16 Original is fully compatible with Prior 16 Original for outdoor situations exposed to the elements or in sheltered areas (zone 1).

**TERGO AND FORMA 11C HD:**

**Closed construction grid system in 11 mm thickness**  
Featuring a closed construction, Tergo and Forma 11C HD offer the ultimate in easy maintenance and provide the ideal solution for indoor installation in shallow recessed mat wells or for surface mounting directly on the floor, secured with an appropriate edging system.

**TERGO AND FORMA 16C HD:**

**Closed construction grid system in 16 mm thickness**  
Featuring a closed construction to allow easy and frequent maintenance in situations with high to extreme traffic conditions. Tergo and Forma 16C HD have been designed for indoor installation in recessed mat wells.

**Superior performance**

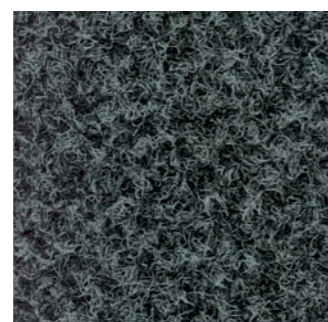
When combined with Forma, the unique brushing efficiency of Tergo can improve total performance of the installation by 50% at dry dirt pick up (based on using same quantity of Forma and Tergo grids on the area). The HD grid design of Tergo and Forma features an 80% textile coverage of the product area for a greater performance at catching dirt and moisture vs. any similar product concept.

**Easy to Install**

OBEX ARX products are extremely easy to install with simple tools (hammer, sharp knife, ruler, safety glove) and are available with a simple to assemble edging system for surface mounted installation. Prior is recommended for use as the perimeter of Tergo and Forma grid installations, particularly in recessed mat wells.

**Easy to clean**

Daily vacuuming is recommended on Tergo and Forma grid systems. Periodic deep cleaning must be performed with the help of a hot water extraction machine to ensure durable product performance.



Scraper textile for Tergo inserts



Foris textile for Forma inserts

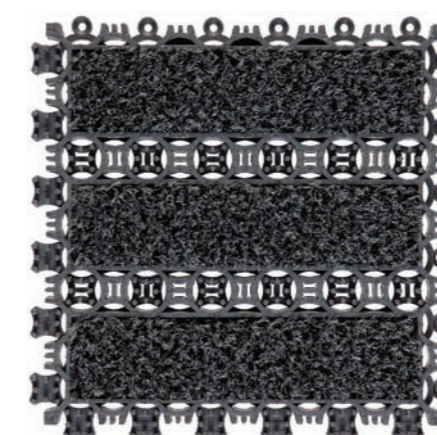


**Forma HD** combines interlocking scraping modules with a textile insert constructed with two types of ECONYL® polyamide high quality fibres: multi filaments that instantly capture moisture as people walk on the product and mono filaments that provide a tough scraping action against dirt particles carried in from the outside. These yarns are twisted and heat set into a unique textile construction providing superior performance at stopping dirt and moisture and easy dirt release during the cleaning process. Prior HD is a plain grid product that ideally complements Forma HD as a border on the perimeter of the flooring area, for a perfectly finished installation.

For full colour range see pages 16-17.



Tergo 16C HD / Tergo 11C HD



Tergo 16 Open



Forma 16C HD / Forma 11C HD

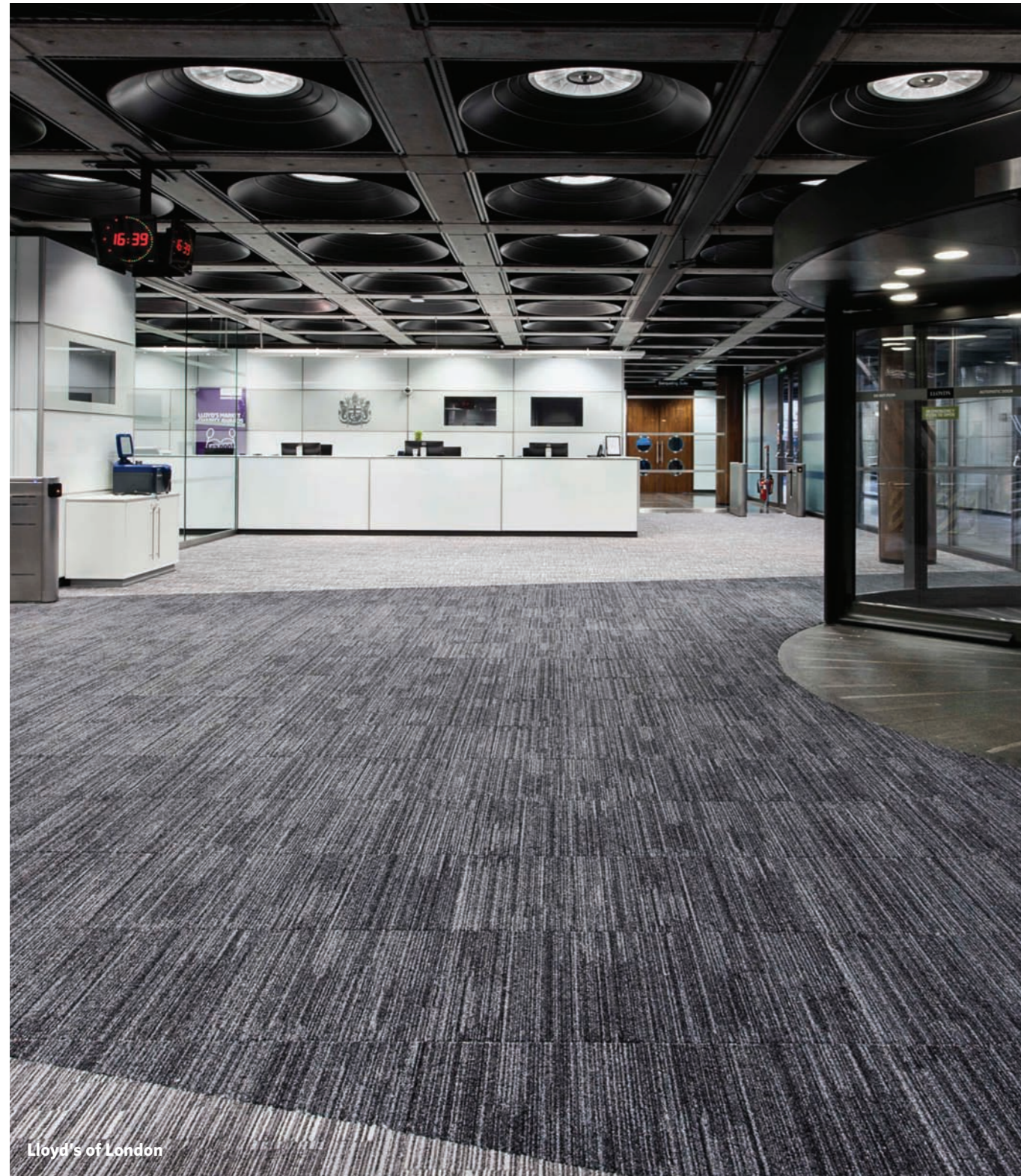
## THE QUADRUS COLLECTION

Designed to offer the ultimate combination of function and design, Quadrus entrance tiles provide the protection and performance expected from the OBEX system whilst at the same time meeting the styling and ergonomic expectations of a Milliken carpet collection.

Quadrus is supplied in a modular tile format with an integral cushion backing that delivers underfoot comfort, improved acoustics and durability. Featuring ECONYL® 100% regenerated polyamide yarn, Quadrus has been designed to stop dirt and moisture at the door, while allowing easy removal during maintenance.

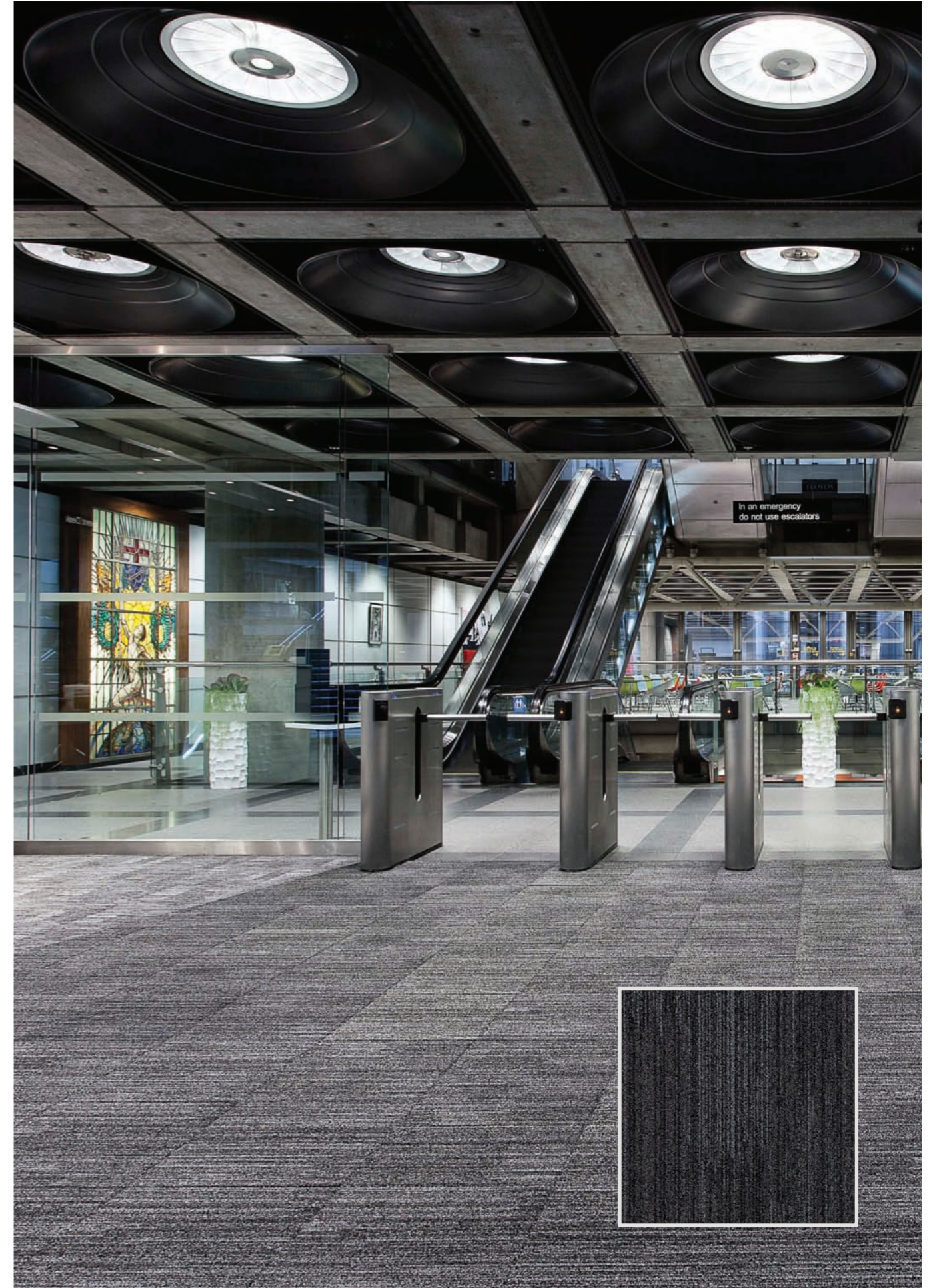
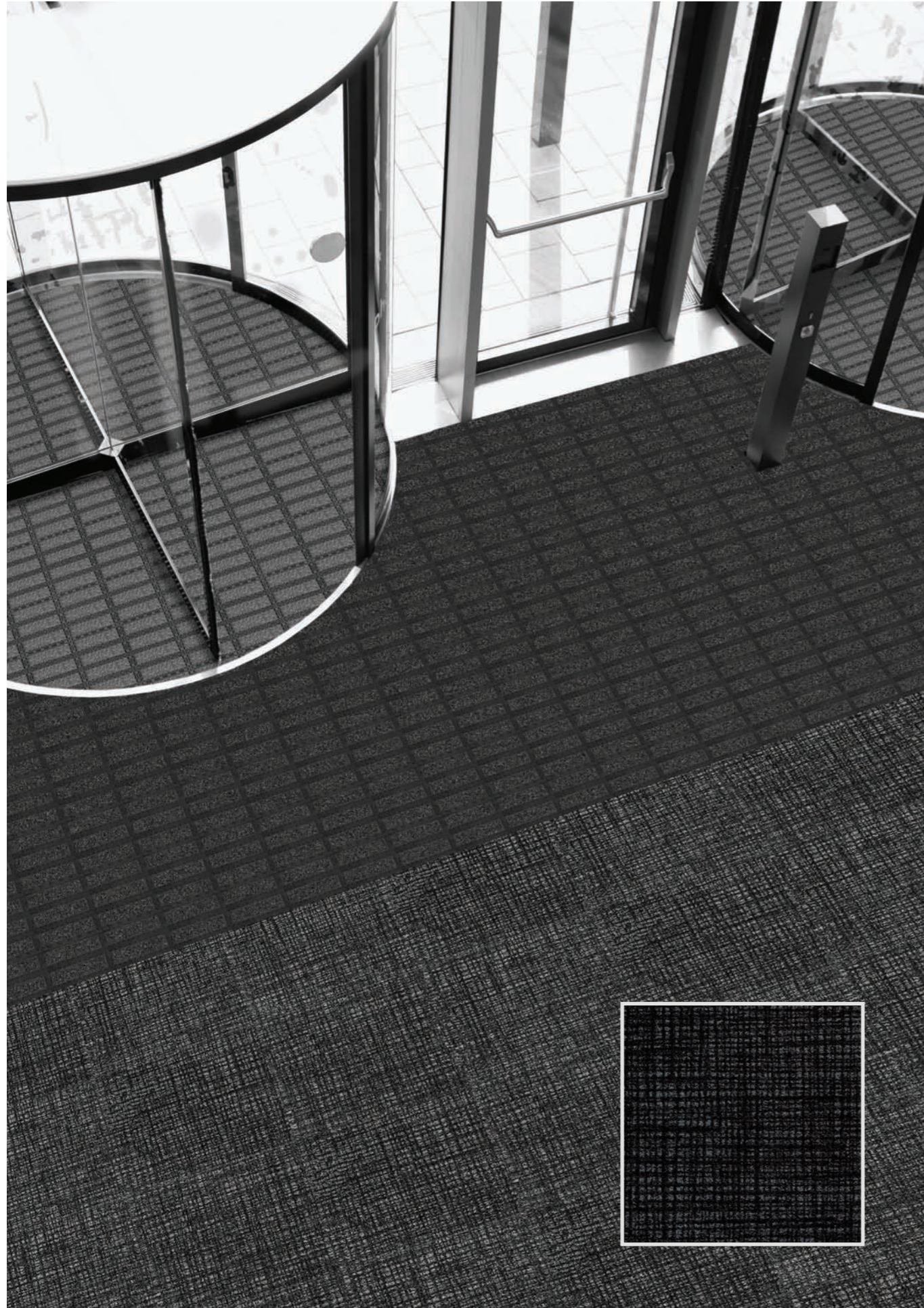
Quadrus is offered in three contemporary designs, Galaxy, Comet and Star, each available in a range of colour options. The designs have been created to provide easy coordination with Milliken's modular carpet collections.

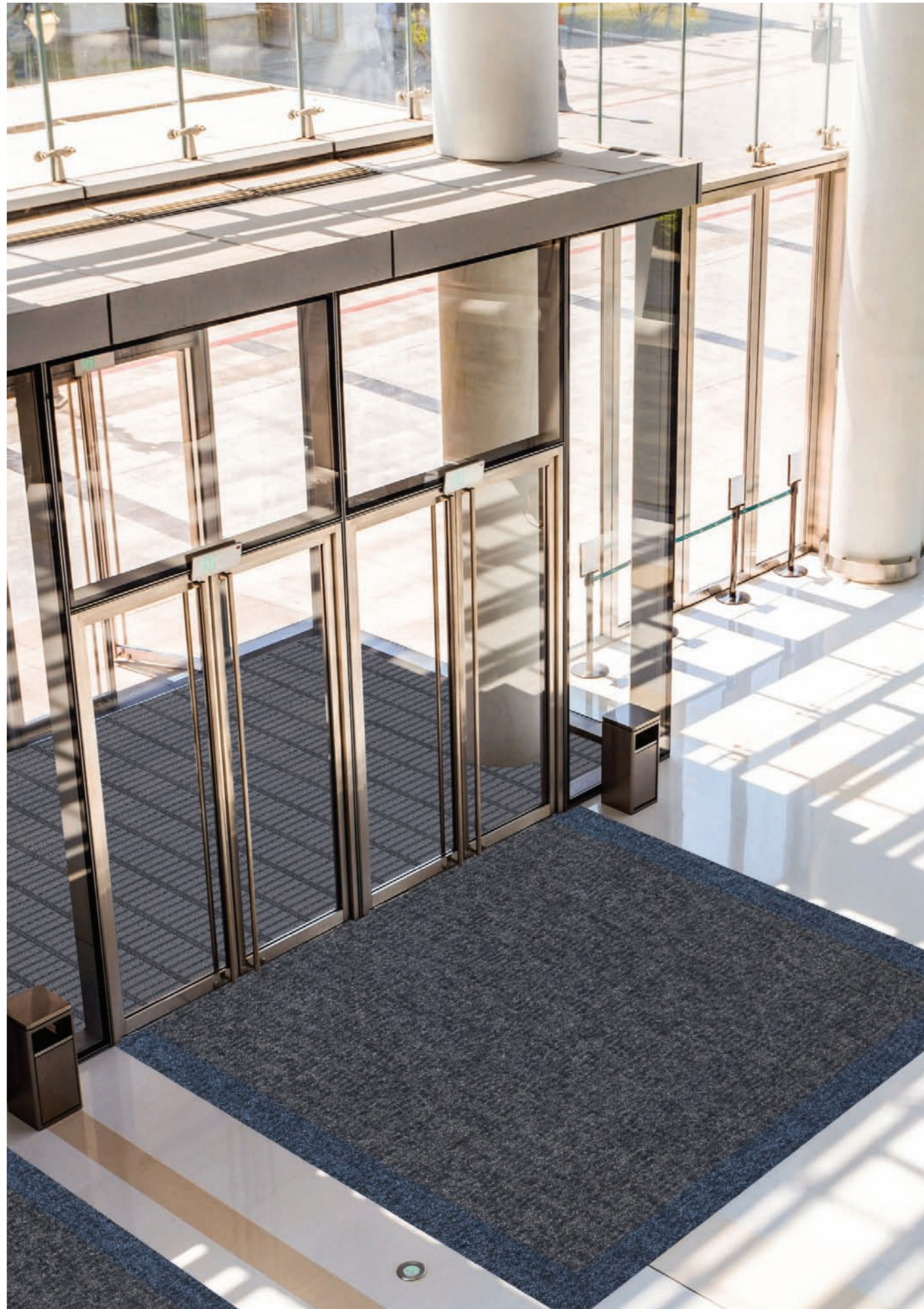
For full colour range see pages 16-17.



## ZONE 3 - QUADRUS GALAXY





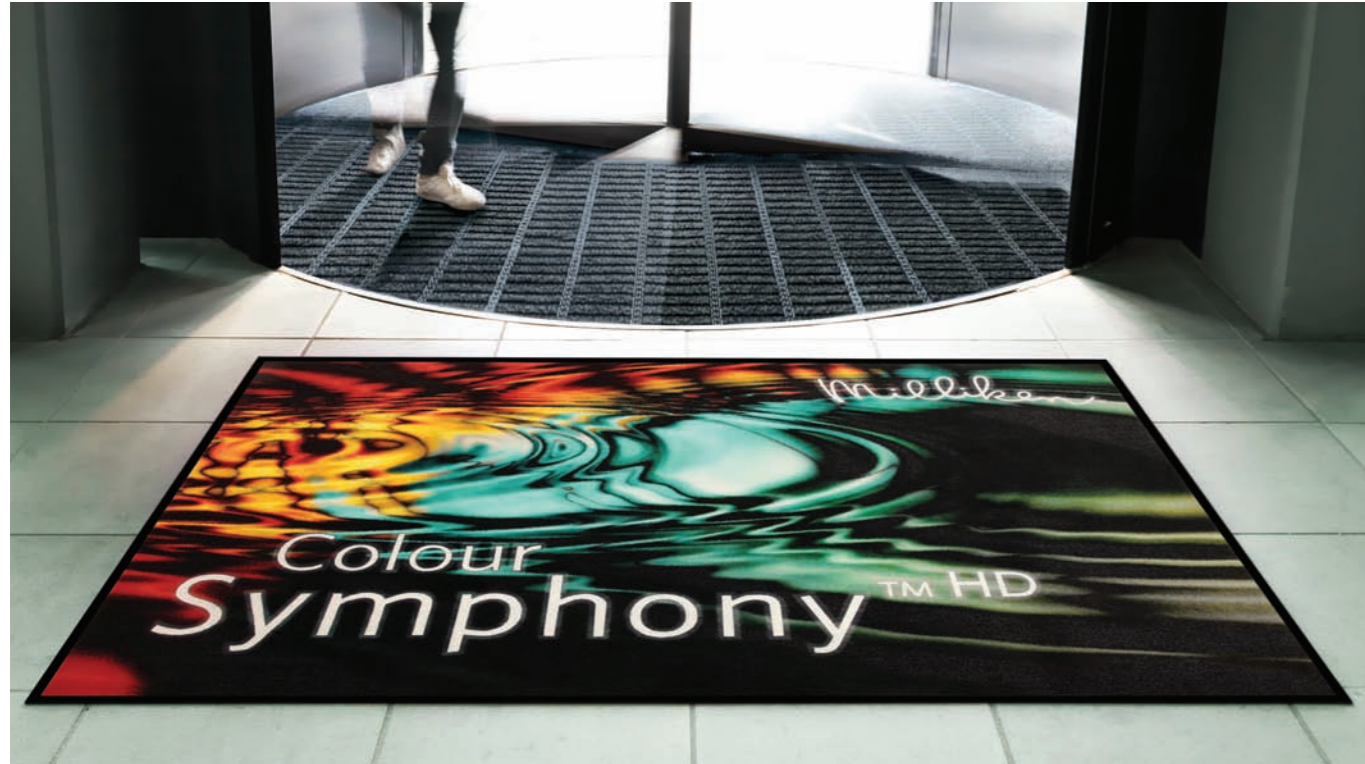


Supplied in roll format, with a premium quality impervious vinyl backing, Foris can be installed wall to wall or cut to produce runners or mats. Foris features ECONYL® 100% regenerated polyamide sourced from post-industrial and post-consumer waste. It combines two types of high resilience polyamide monofilament fibres to provide a brushing action and multifilament fibres to provide an absorption effect.

Foris is also available as rubber backed high quality mats for loose laid applications throughout the building to protect specific areas. It comes in a large choice of standard sizes as well as special sizes manufactured on demand.

For full colour range see pages 16-17.



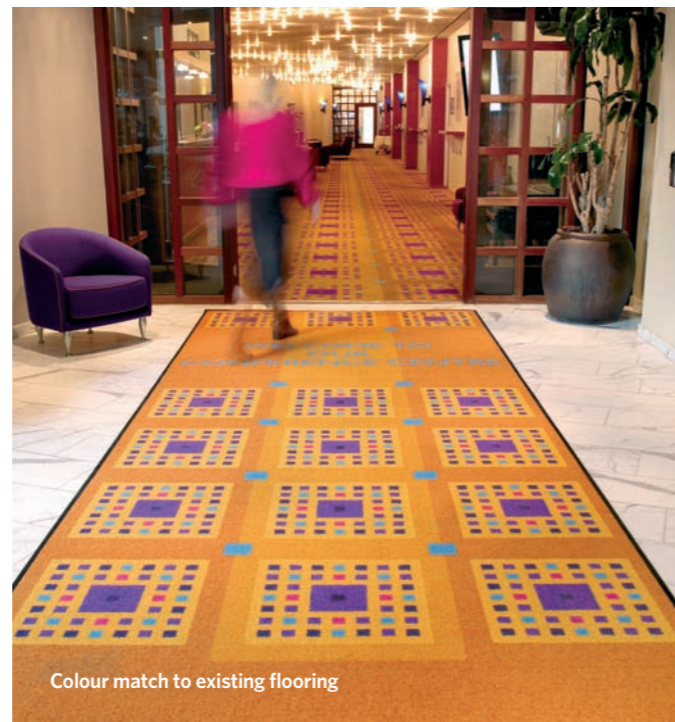


**LOGOMATS BEYOND YOUR IMAGINATION**  
Corporate Image, Branding, Advertising and Functionality

Representing the most advanced dye injection technology available, Milliken's **Colour Symphony HD** logo mat system allows us to create high performance mats featuring beautiful patterns, photo-realistic images and logos.

**COLOUR SYMPHONY HD OFFERS:**

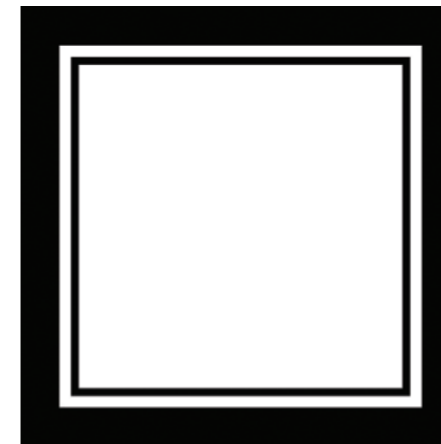
- A palette of 150 standard colours – to create even the most complex photo-realistic and logo designs as well as rich and saturated solid shades.
- Higher definition, clearer text and more realistic effects – **Colour Symphony HD** operates at 76 dots per inch allowing us to achieve greater clarity of design, finer text definition, shadowing, shading and 3D effects.



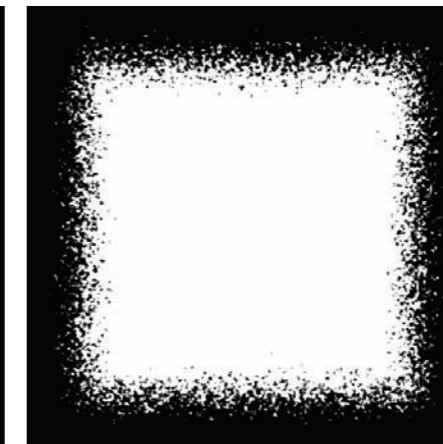
Colour match to existing flooring



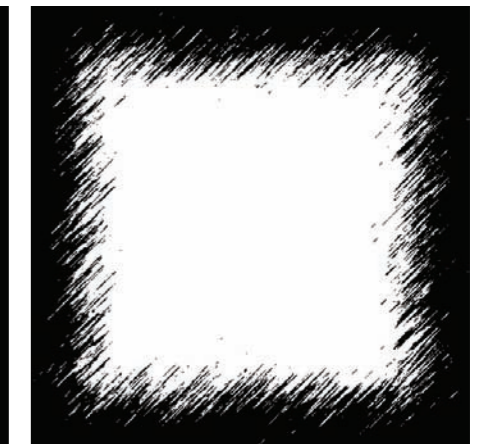
**Printed Border Options**



Plain double

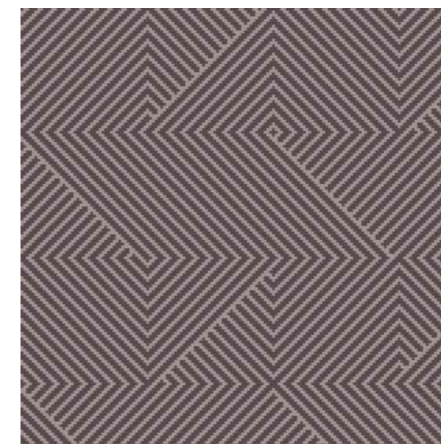


Splatter

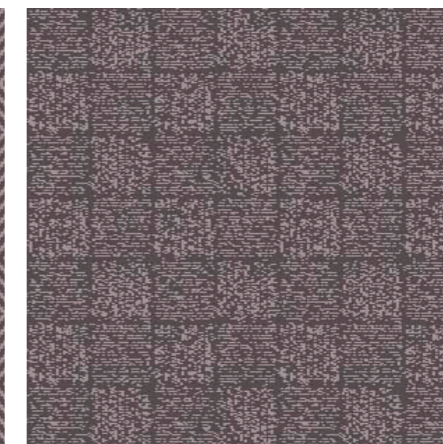


Sprayed

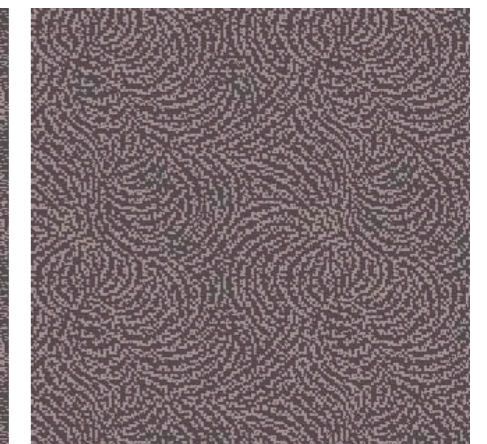
**Background Patterns**



Maze



Sisal



Swirls



## OBEX COLOUR RANGE

### FORMA HD



GXY7711 Jupiter



GXY7712 Moon



GXY7713 Uranus



GXY7714 Neptune



GXY7715 Earth



GXY7716 Mercury



GXY7717 Venus



GXY7718 Mars



GXY7719 Emerald



GXY7720 Ruby



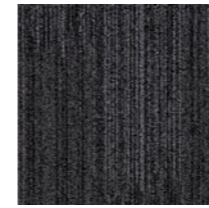
GXY7721 Amethyst



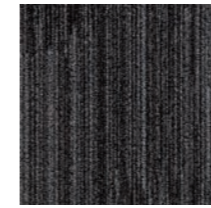
GXY7722 Diamond

## OBEX COLOUR RANGE

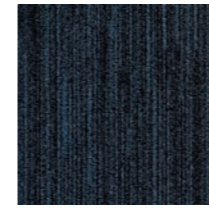
### QUADRUS - COMET



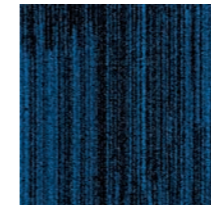
CMT27 Jupiter



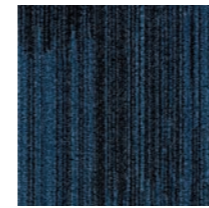
CMT118-27 Moon



CMT73 Uranus



CMT183 Neptune



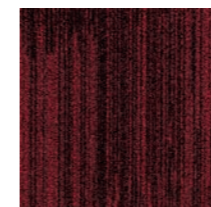
CMT123 Earth



CMT96 Mercury

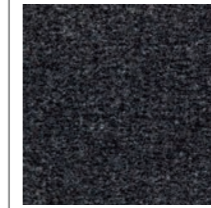


CMT114 Venus

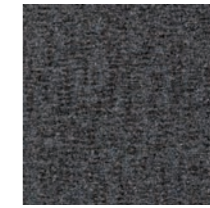


CMT169 Mars

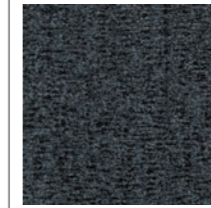
### QUADRUS - GALAXY



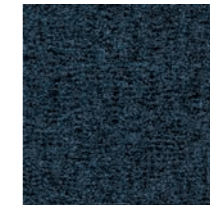
GXY27 Jupiter



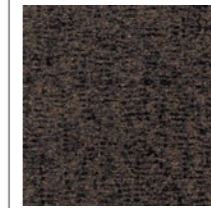
GXY7722 Diamond



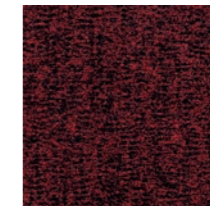
GXY73 Uranus



GXY123 Earth

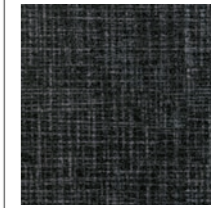


GXY114 Venus

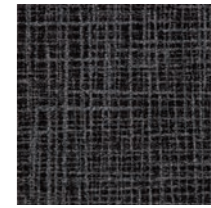


GXY169 Mars

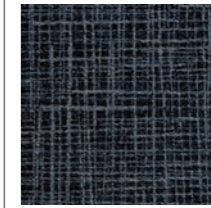
### QUADRUS - STAR



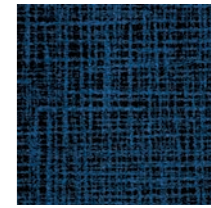
SAR27 Jupiter



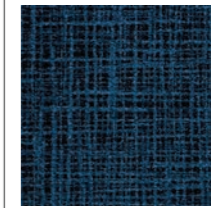
SAR118-27 Moon



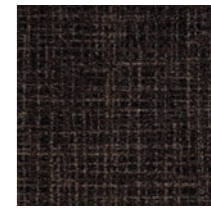
SAR73 Uranus



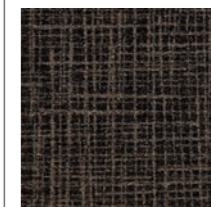
SAR183 Neptune



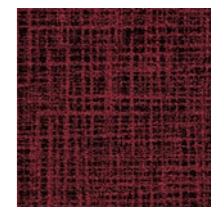
SAR123 Earth



SAR96 Mercury



SAR114 Venus



SAR169 Mars

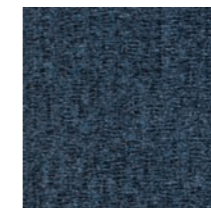
### FORIS - GALAXY



GXY7711 Jupiter



GXY7712 Moon



GXY7713 Uranus



GXY7714 Neptune



GXY7715 Earth



GXY7716 Mercury



GXY7717 Venus



GXY7718 Mars



GXY7719 Emerald



GXY7720 Ruby

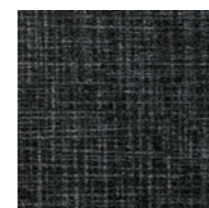


GXY7721 Amethyst

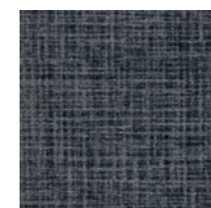


GXY7722 Diamond

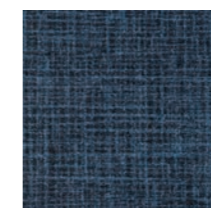
### FORIS - STAR



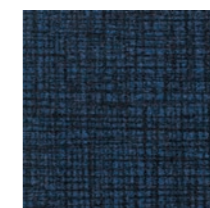
SAR7711 Jupiter



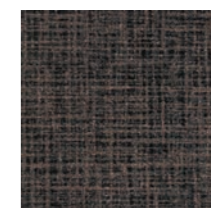
SAR7712 Moon



SAR7713 Uranus



SAR7715 Earth



SAR7716 Mercury



SAR7718 Mars

## INSTALLATION - ARX HD



Tiles are pre-packaged in 6-tile units



Quick to assemble with a hammer

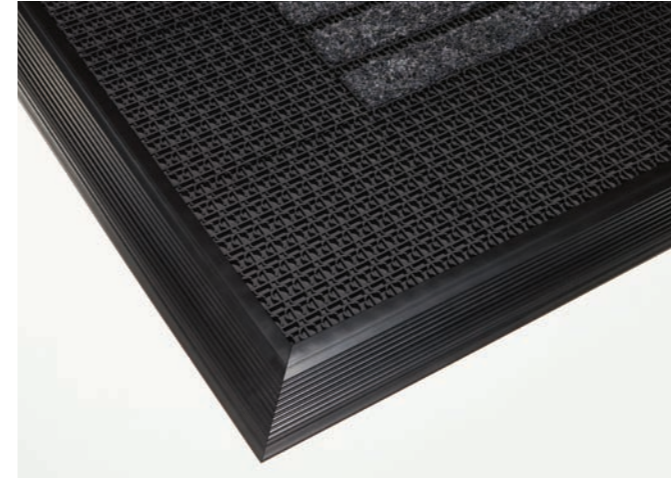


Easy to cut with a sharp knife

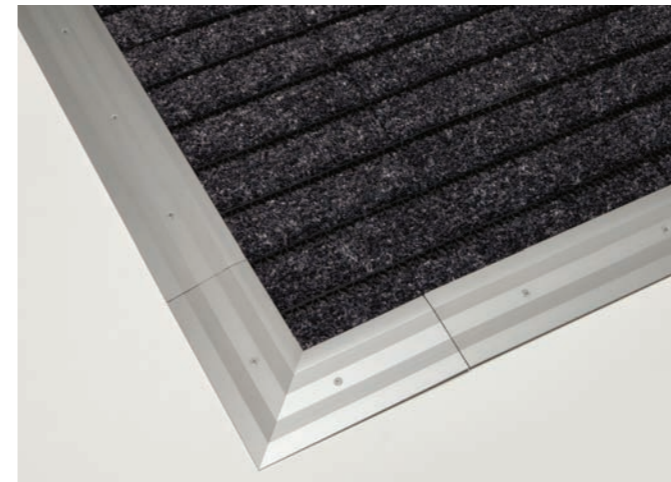


Finished installation

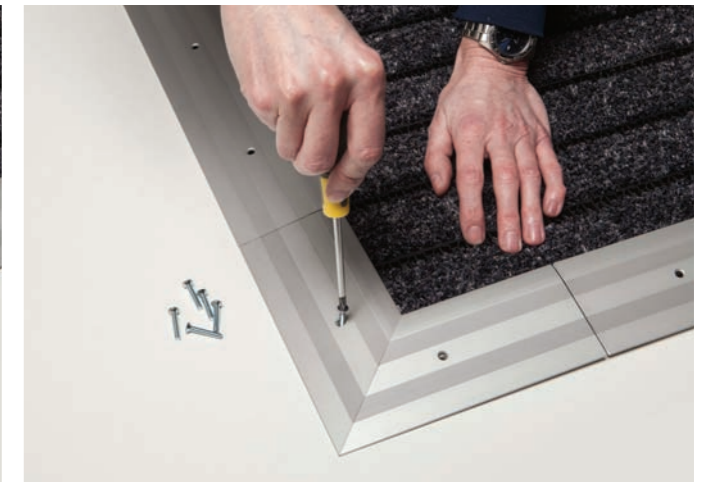
## EDGING SYSTEMS FOR ARX MODULAR TILES



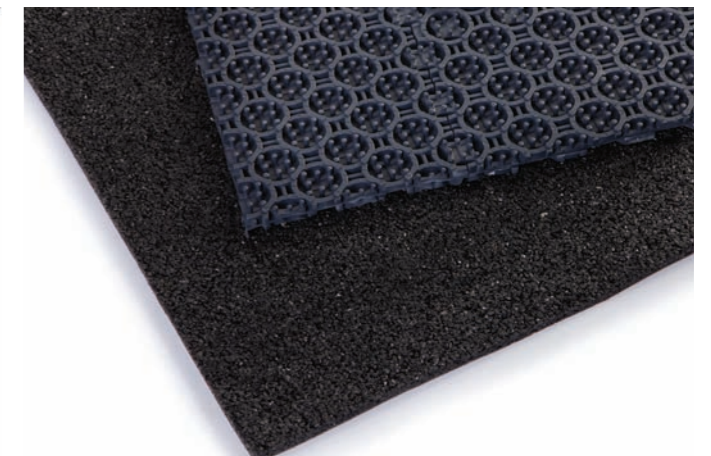
**PVC EDGING** Available in 11mm and 16mm thickness and 2 metre lengths



**ALUMINIUM EDGING** Available in 11mm thickness and 2.7 metre lengths with pre-mitred corners



**ECOFLEX UNDERLAY** Easy to use recycled rubber sheets for mat well depth compensation



## Showrooms around the world



Clerkenwell, London



New York



Chicago



Shanghai

### Milliken - Europe, Africa, Middle East

Beech Hill Plant, Gidlow Lane,  
Wigan, WN6 8RN,  
United Kingdom  
T: +44 1942 612999  
F: +44 1942 612499  
Enquiries: matsinfoeurope@milliken.com  
Orders: matsorderseurope@milliken.com  
UK: Freephone: 0800 964 569

### Milliken - Asia, India, Australia, New Zealand

15th Floor, Building 2,  
1535 Hong Mei Road, Xuhui District,  
Shanghai, China 200233  
T: +8621 6145 5555  
F: +8621 6145 5558  
Enquiries & Orders:  
CustomerService.CH@milliken.com

### Milliken - Americas

920 Milliken Road,  
Spartanburg,  
South Carolina 29303, USA  
T: 1.800.342.5539  
F: 706.880.5358  
Enquiries & Orders:  
mats.orders@Milliken.com