



# Mats

**OBEX**<sup>®</sup>

Prior<sup>™</sup> & Forma<sup>™</sup>

Modular Matting Systems  
for Entrance Areas

*Milliken*<sup>™</sup>

# Prior™

Prior™ is a flexible multi-purpose flooring product designed for indoor and outdoor use. Installed as primary outdoor matting, fitted into matwells or applied to a variety of industrial and commercial tasks. The product structure incorporates resilient scrapers to remove particulate dirt.



## Product Constructions

3 heel-proof product constructions for optimum flexibility and maximum efficiency:

First brought to market by Milliken, this innovative concept offers a unique choice of modular tile matting systems designed to act as a primary barrier for dirt entering a building through pedestrian traffic.

### Prior™ 11C and Forma™ 11C

- closed construction to allow easy maintenance
- 11 mm thickness for installation in shallow matwells or surface mounted directly on the subfloor right next to any type of floor covering.



Forma™ 16

### Prior™ 16 and Forma™ 16

- open structure for an efficient drainage and storage of dirt and moisture
- 16 mm thickness for installation in recessed matwells
- suitable for sites with heavy soiling conditions where regular deep cleaning maintenance regime is monitored.



Prior™ 16

### Prior™ 16C and Forma™ 16C

- super heavy duty 16 mm thickness construction for installation in recessed matwells with high to extreme traffic conditions
- closed construction to allow easy and frequent maintenance.

## Superior Textile Performance

The textile in Forma™ is constructed with two types of polyamide 6.6 high quality fibers:

- the multi filaments that capture moisture instantly when people walk on the mat.
- the mono filaments working as tough scrapers against dirt particles brought by shoes.

## Edging System for Prior™ & Forma™

A simple and easy to assemble edging system is available for surface mounted installation.



# Forma™

The combination of the patented Obex® textile inserts with the exclusive design of the Prior™ module produces a revolutionary matting system – unequalled in performance and unique in aesthetics: Forma™. Ideal for indoor use.

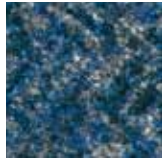


## Forma™ Color Range

Totally compatible with Prior™, Forma™ is available in the same Graphite color. The textile inserts in Forma™ are available in 8 different colors – fully co-ordinated with Atrium Plus™ mats and runners.



Ash  
7010



Lagoon  
7020



Sand  
7012



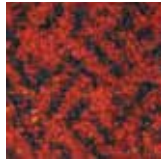
Bark  
7016



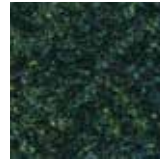
Ammonite  
7011



Twilight  
7021



Volcano  
7014



Fern  
7018

## Easy to Install



Forma™ pre-assembled in 6 tile units



Quick to assemble with a hammer



Easy to cut with ruler and knife



Finished installation

## Maintenance

Daily vacuum cleaning is recommended. Prior™ can be cleaned with high pressure water jet. Forma™: we advise periodic cleaning by injection/extraction method. Water temperature should not exceed 50°C. Cleaning frequency being related to foot traffic and soiling conditions.

Suitable for intense traffic up to 5,000 people per day.

5 Year  
Wear  
Guarantee

# Technical Specifications

Product Information	Prior™ 11C	Prior™ 16	Prior™ 16C
Tile material	UV resistant PVC		
Tile construction	Closed	Open	Closed
Total thickness in mm	11	16	16
Total weight in kg per m <sup>2</sup>	5.42	7.11	9.34
Safety	Friction test DS/EN ISO 8295 (2004)		
Outdoor temperature resistance	From - 30°C up to + 50°C		
Ozone resistance	50 pphm ozone 30°C		
Wear resistance - Vetterman test	22,000 cycles	66,000 cycles	66,000 cycles
Fire resistance test	BS 4790		
Fire classification - FR version	NA	Class C <sub>FL</sub> -s2	NA
Tile size in mm	Nominal 200x200 – Useable 195x195 when installed		
Tile colour	Graphite		

Product Information	Forma™ 11C	Forma™ 16	Forma™ 16C
Tile material	UV resistant PVC		
Tile construction	Closed	Open	Closed
Total thickness in mm	11	16	16
Yarn type	100% Polyamide 6.6 - mono & multi filaments		
Yarn construction	High Twist and Heat Set combination of mono & multi filaments		
Textile weight in gms per m <sup>2</sup>	1075	1075	1075
Total weight in kg per m <sup>2</sup>	6.85	9.11	10.40
Textile Dyeing Technology	Millitron®		
Textile light fastness	Xenotest ISO 105-B01 : > 6 on blue scale		
Wear resistance - Vetterman test	22,000 cycles	66,000 cycles	66,000 cycles
Fire resistance test	BS 4790		
Tile size in mm	Nominal 200x200 – Useable 195x195 when installed		
Tile colour	Graphite		

All specifications are according to ISO 9001 Quality certification and ISO 14001 Environmental certification, and are subject to change to meet the ongoing improvements and innovation of our products.

Please Note: As each customer's use of our product may be different, information we provide, including without limitation, recommendations, test results, samples, care/labeling/processing instructions or marketing advice, is provided in good faith but without warranty and without accepting any responsibility/liability. Each customer must test and be responsible for its own specific use, further processing, labeling, marketing, ect. All sales are exclusively subject to our standard terms of sales posted at [www.milliken.com/terms](http://www.milliken.com/terms) (all additional/different terms are rejected) unless explicitly agreed otherwise in a signed writing.

## Edging system Prior™ and Forma™

Edge strip of 40 cm long – connecting directly on Prior™ or Forma™ tiles.

Corners are made by cutting 2 pieces at 45° angle. Colour: Graphite. Not available for Prior™ 16C and Forma™ 16C.

### Milliken - Americas

T: 1.800.342.5539

F: 706.880.5358

Information: [matsinfoamericas@milliken.com](mailto:matsinfoamericas@milliken.com)

Orders: [matsordersamericas@milliken.com](mailto:matsordersamericas@milliken.com)

### Milliken - Europe, Africa, Middle East

T: +44 1942 612999

F: +44 1942 612499

Information: [matsinfoeurope@milliken.com](mailto:matsinfoeurope@milliken.com)

Orders: [matsorderseurope@milliken.com](mailto:matsorderseurope@milliken.com)

### Milliken - Asia, India, Australia, New Zealand

T: +86 21 61455555

F: +86 21 61 455558

Information: [matsinfoasiapacific@milliken.com](mailto:matsinfoasiapacific@milliken.com)

Orders: [matsordersasiapacific@milliken.com](mailto:matsordersasiapacific@milliken.com)

[walkoffmats.com](http://walkoffmats.com) | design website: [positive-impressions.com](http://positive-impressions.com)