

Topguard®

Topguard is constructed from rubber wipers and scraper linking strips which are held together with galvanised steel wires. The rubber wipers are available either plain or interwoven with nylon fibres in a choice of grey or black. The scraper linking strips are available in either aluminium or brass. When installed as a true rectangle or a square Topguard can be reversed to extend the product's life.

For a complete matting solution Topguard can also be used with Boulevard secondary barrier carpet.

Typical applications: Airports, railway stations, supermarkets & sports stadiums.

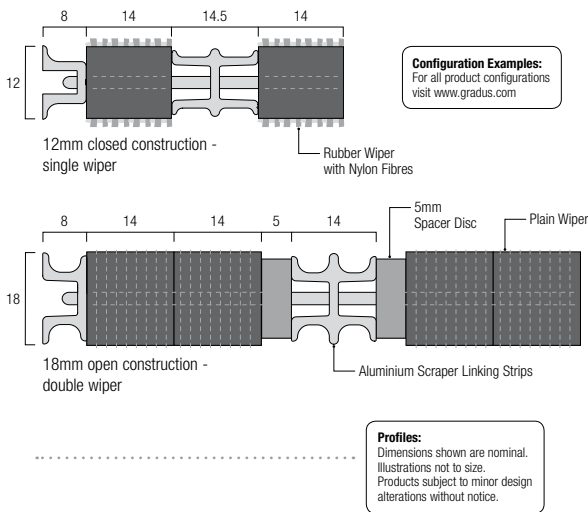
Product Information

See primary matting product selection guide - **pages 14-15**

 Heavy	 Heavy (150kg)	 12mm Gauge	 18mm Gauge
double wiper	single wiper	double wiper	single wiper
 High	 Medium	 High	 Medium

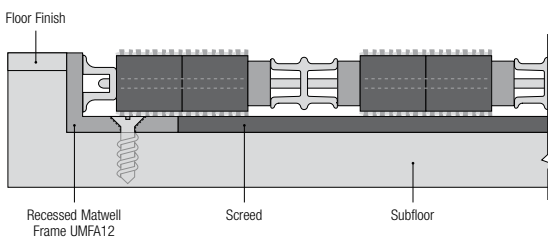
Note - plain wiper - scraper action only - for exterior use.

- Available in open (5mm) or closed construction
- Available with single or double wipers
- Supplied with divider bars (see page 49)
- Slip-resistance (HSL ramp test) - low risk of slip
- Can be manufactured to most shapes on approval of a template
- Warranty - 10 years



Typical Installation

Topguard 12mm open construction with double grey nylon wipers and aluminium scraper linking strips. Recessed in a matwell.

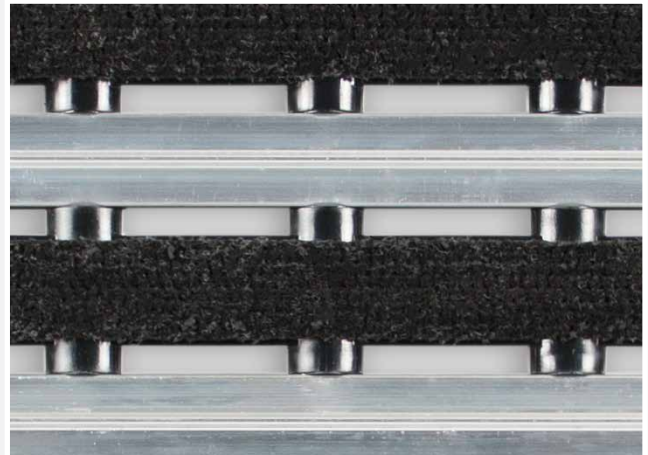


For installation accessories see pages 48-49.
For matwell frames and matting accessories see pages 50-55.

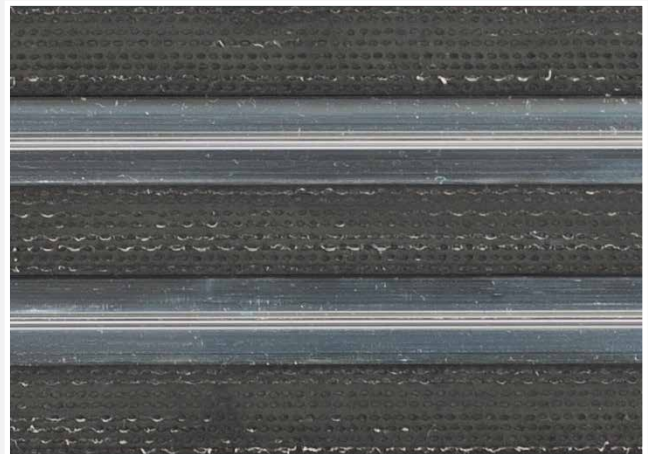
Topguard - Closed construction (shown with grey single wipers)



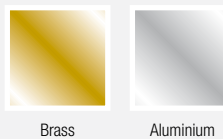
Topguard - Open construction (shown with black single wipers)



Topguard - Closed construction (shown with plain single wipers)



Scraper Linking Strips



Plain wipers only available with aluminium scraper linking strips.