

## Effective matting systems

### Company Introduction

- Ireland's market leader for entrance matting and safety flooring
- Site survey, product advice, quotation and installation
- Nationwide service, after sales support and scheduled maintenance
- Certified installation with product warranty

## WORKPLACE SOLUTIONS



### ENTRANCE MATTING

Improves safety and enhances threshold image. Protects finished floor surfaces.  
*Application:* matwell, surface mounted with safety edging.



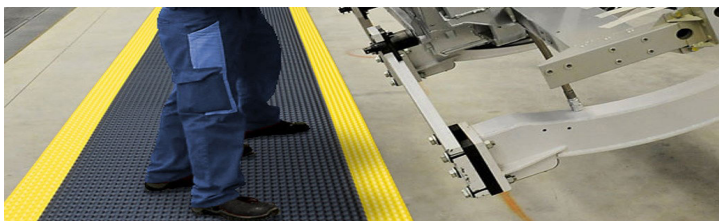
### EXTERIOR MATTING

First line of defence reducing the ingress of contaminants into buildings. Improves safety.  
*Application:* matwell, surface mounted with safety edging.



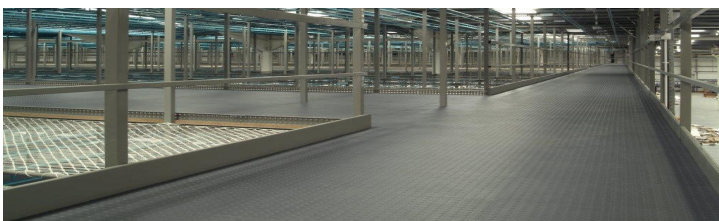
### CARPET TILES

Carbon neutral with LEED certification. Acoustic cushion backing. Design service.  
*Application:* office, reception areas, boardroom.



### ANTI-FATIGUE MATTING

Engineered to reduce fatigue and increase productivity. Extensive range.  
*Application:* individual work stations, large assembly lines.



### INTERLOCKING PVC FLOOR TILES

Excellent insulation from concrete sub floors. Wide range of colours used to identify specific areas. Non-slip. Fire resistant. R10.  
*Application:* production areas, store rooms, lifts.



### CONTAMINATION CONTROL MATTING

Captures foot and wheelborne particulates on entry to controlled environments.  
*Application:* gowning areas, cleanroom access points.

## Effective matting systems



### DUST MATS

High performance stable industrial dust mats with 3mm safety backing.

*Application:* staff entrances, reception areas, lobbies.



### LOGO MATS/ SAFETY MESSAGE MATS

High quality colour definition. Artwork service.

*Application:* promote corporate image, safety messaging, product marketing.



### WET AREA MATTING

Surface mounted modular or interconnecting matting. Slip resistant. Wide range of colours.

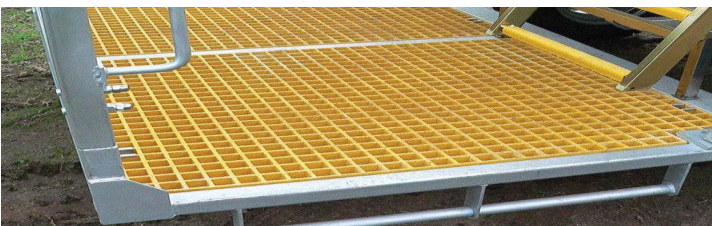
*Application:* wet areas, locker rooms, showers.



### ROOFWALK SAFETY MATTING

Roof safety and roof protection for designated walkways. Maintenance access to roof mounted equipment.

*Application:* service access.



### GRP SAFETY GRID PANELS

High performance safety flooring with non-slip silicon carbide finish.

*Application:* inclines, industrial walkways, roof bridges.



### WALL PROTECTION SYSTEMS

Barrier against damage caused by the general flow of wheeled and pedestrian traffic.

*Application:* walls, pillars, corners, doors.



### STAIR NOSING AND SAFETY TRIMS

Define the edges of steps. Slip reduction.

Improves safety through increased definition.

*Application:* access steps, stairways.